



**Can you see me
on the map?**

That's where you'll find
hands-on activities

**The Soldiers of
Oxfordshire Trust**

is a company limited by
guarantee, registered in
England and Wales,
No: 7842383 and a registered
charity, No: 1145408



Through interactive displays of social
history, archaeology and art, the
Oxfordshire Museum explores the
unique history of the County and its
people. A programme of changing
exhibitions and activities compliment
the permanent displays. Admission
is free. [www.oxfordshire.gov.uk/
oxfordshiremuseum](http://www.oxfordshire.gov.uk/oxfordshiremuseum) T: 01993 811456.



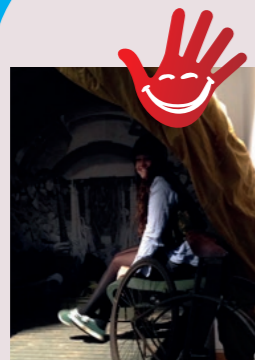
**PARK STREET WOODSTOCK
OXFORDSHIRE OX20 1SN**

Visitor access to SOFO is through
the Oxfordshire Museum.

Cloister Gallery – Changing Exhibitions



Under 5s Den



**REPLICA
SECTION
OF HORSA
GLIDER**



**BATTLES, THE
OXFORDSHIRE AND
BUCKINGHAMSHIRE
LIGHT INFANTRY**



**PRISONERS OF WAR AT
HOME AND ABROAD**



**THE
OXFORDSHIRE
YEOMANRY
AT THE
LIBERATION OF
BERGEN-BELSEN
CONCENTRATION
CAMP**



THE SECRET WAR

**MODERN
CONFLICT
21ST CENTURY
SOLDIER**



MOTORIZED CANOE

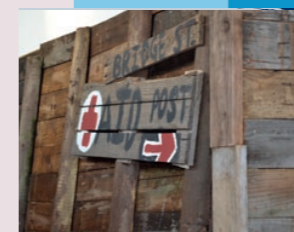


**CHURCHILL
AND THE
QUEENS OWN
OXFORDSHIRE
HUSSARS**

**AIRPOWER, THE
AIRMEN AND
AIRFIELDS OF
OXFORDSHIRE**



**BLOOD & WAR,
LIFE ON THE
FRONT LINE**



Trench

**Reception
& shop**



Regimental and County Time Lines

Garden Gallery

**Medal
Display**